

# USING THE LICENSE AND SQL SERVER ADMINISTRATION TOOL FOR REDHORSE CRM

This article will walk you thru using the License and SQL Server Administration tool for RedHorse CRM.

## License and SQL Server Administration Tool

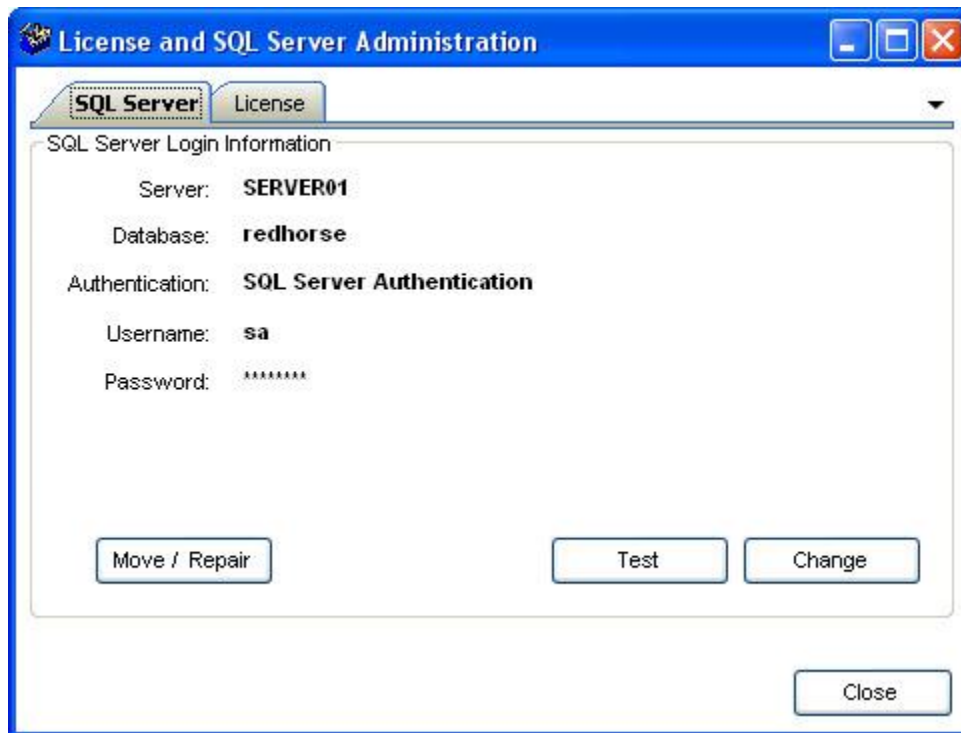
The License and SQL Server Administration Tool allows you to:

- Enter, change and test SQL login information.
- Enter licenses for CRM.

This tool may be launched from the path where RedHorse CRM is installed. The file is called LicenseManager.exe.

## SQL Server Login Information

The SQL Server tab shows you the login information for your SQL Server that was entered during the installation. You may click the Test button on this screen to verify the login information.

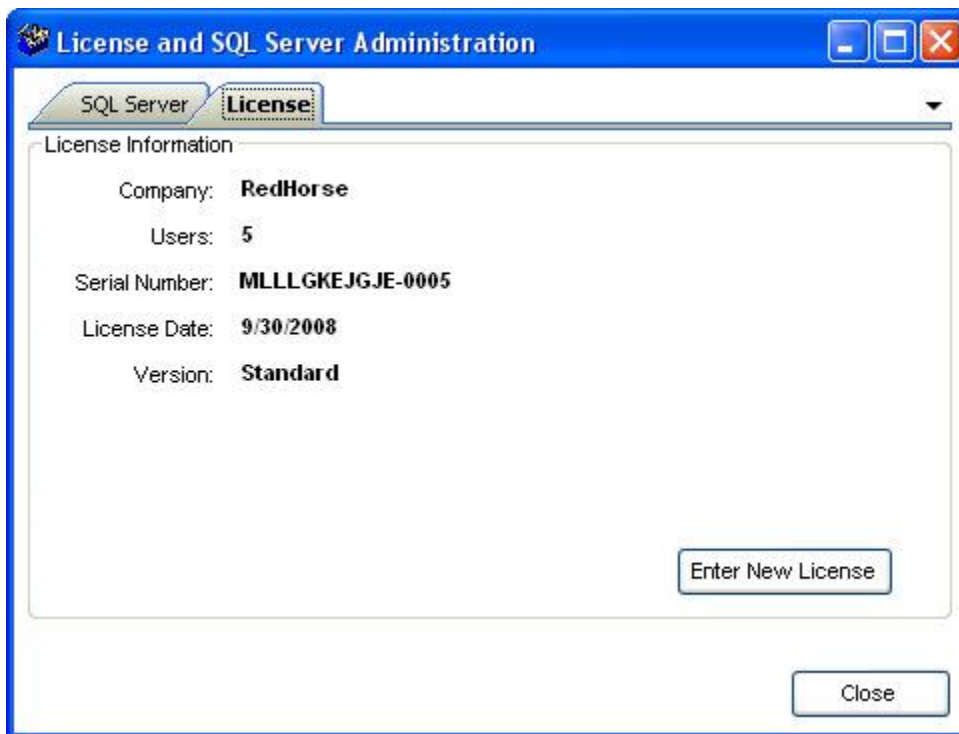


To change the SQL Server information or password, click the Change button. Enter the new information in the dialog. Use the Test button to verify the login information. Click OK to save, or cancel to exit without saving changes.



## Licensing CRM

Licensing information for CRM is found on the License tab.



To enter a new license number for CRM, click the Enter New License and enter your CRM license number.



The image shows a standard Windows-style dialog box with a blue title bar. The title bar contains the text "Enter New License Number" and a red "X" icon in the top right corner. The main area of the dialog is white and contains a text input field with the label "License Number" to its left. Below the input field, there are two buttons: "OK" and "Cancel", positioned side-by-side.

Click OK to save and your new license will be installed.

Please contact support if you experience any issues during the use of the License and SQL Server Administration Tool.

[support@redhorsesystems.com](mailto:support@redhorsesystems.com)

[www.redhorsesystems.com](http://www.redhorsesystems.com)